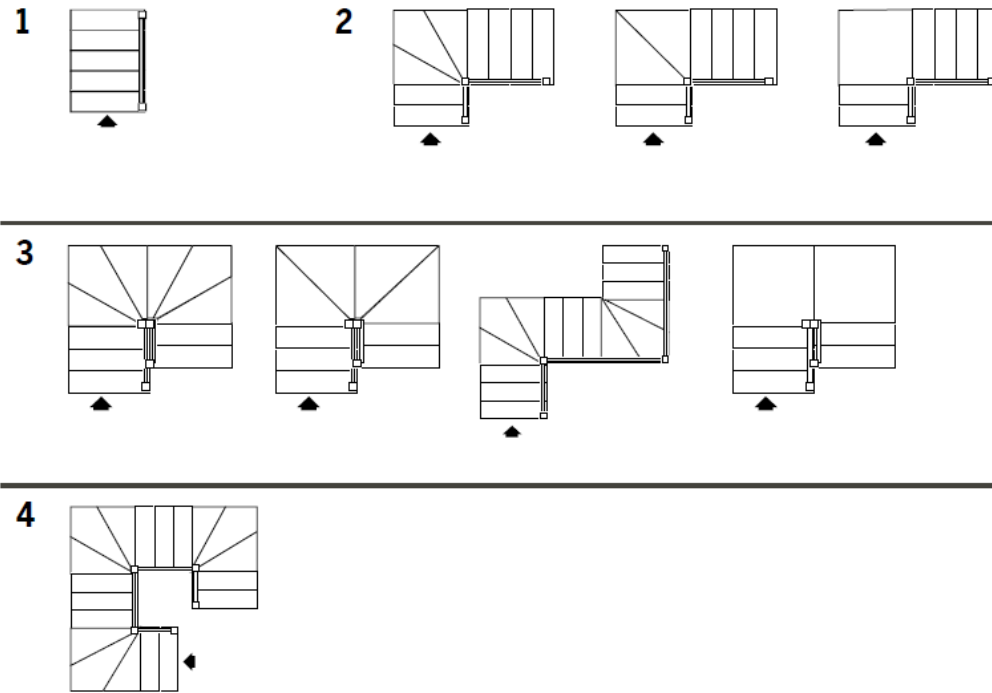
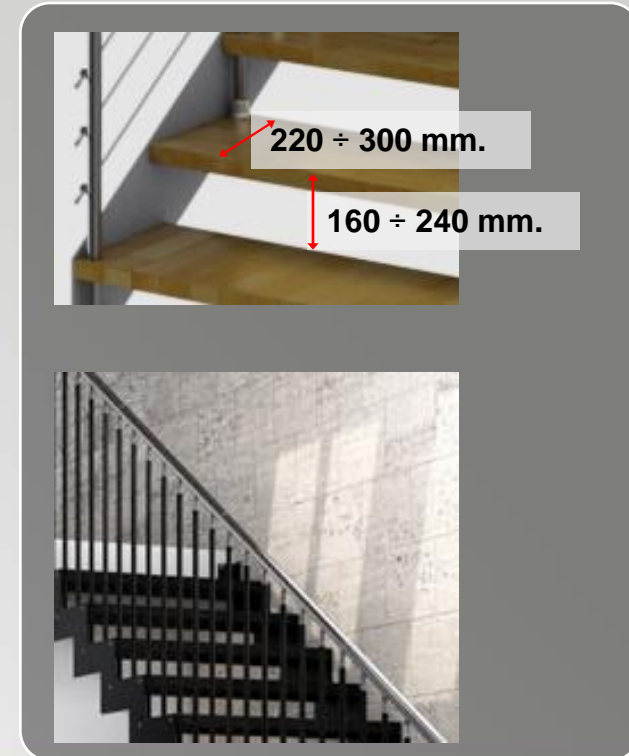
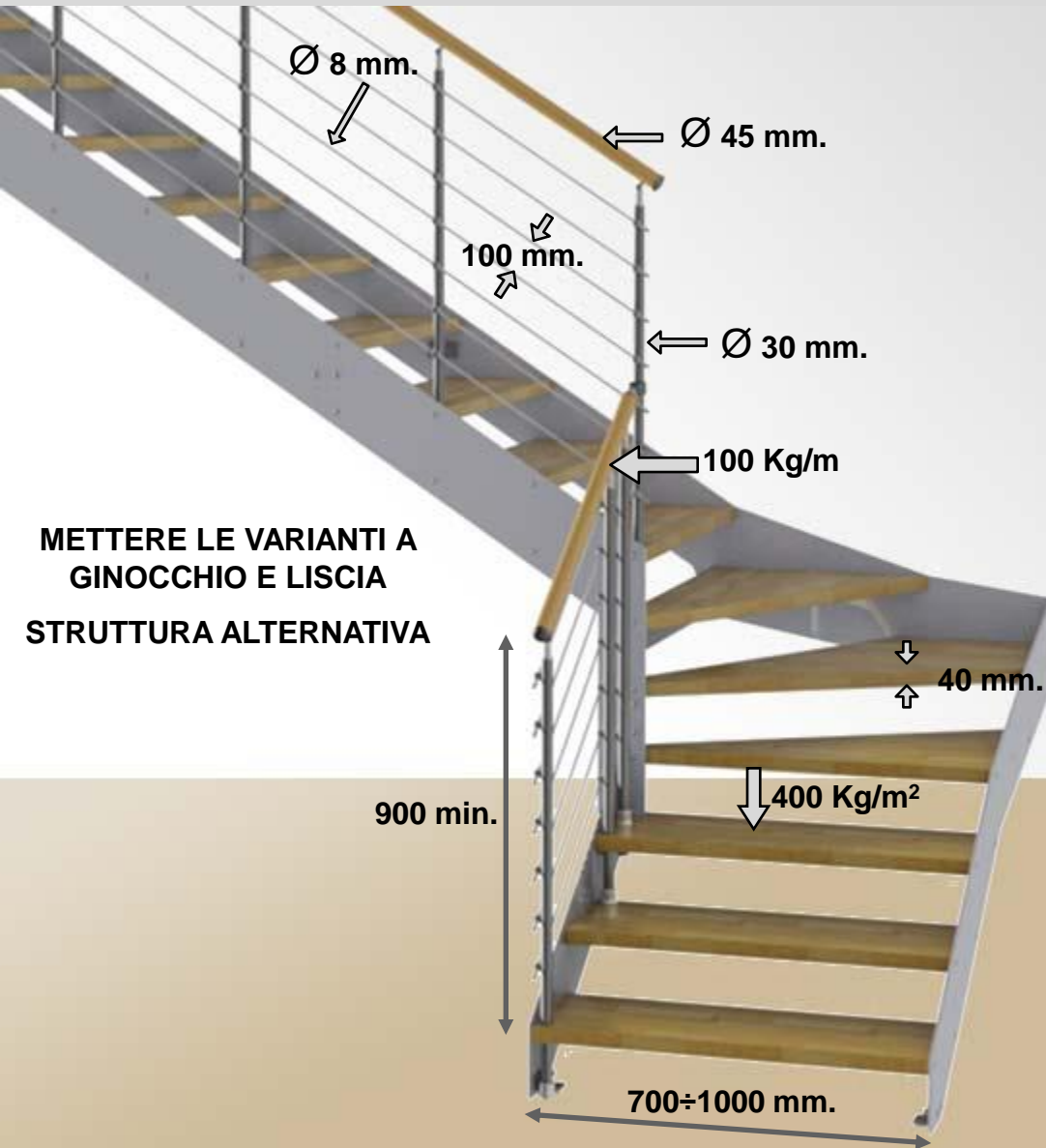


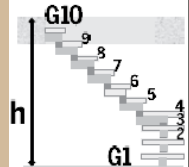
## Forme · Formes · Shapes · Formen · Formas



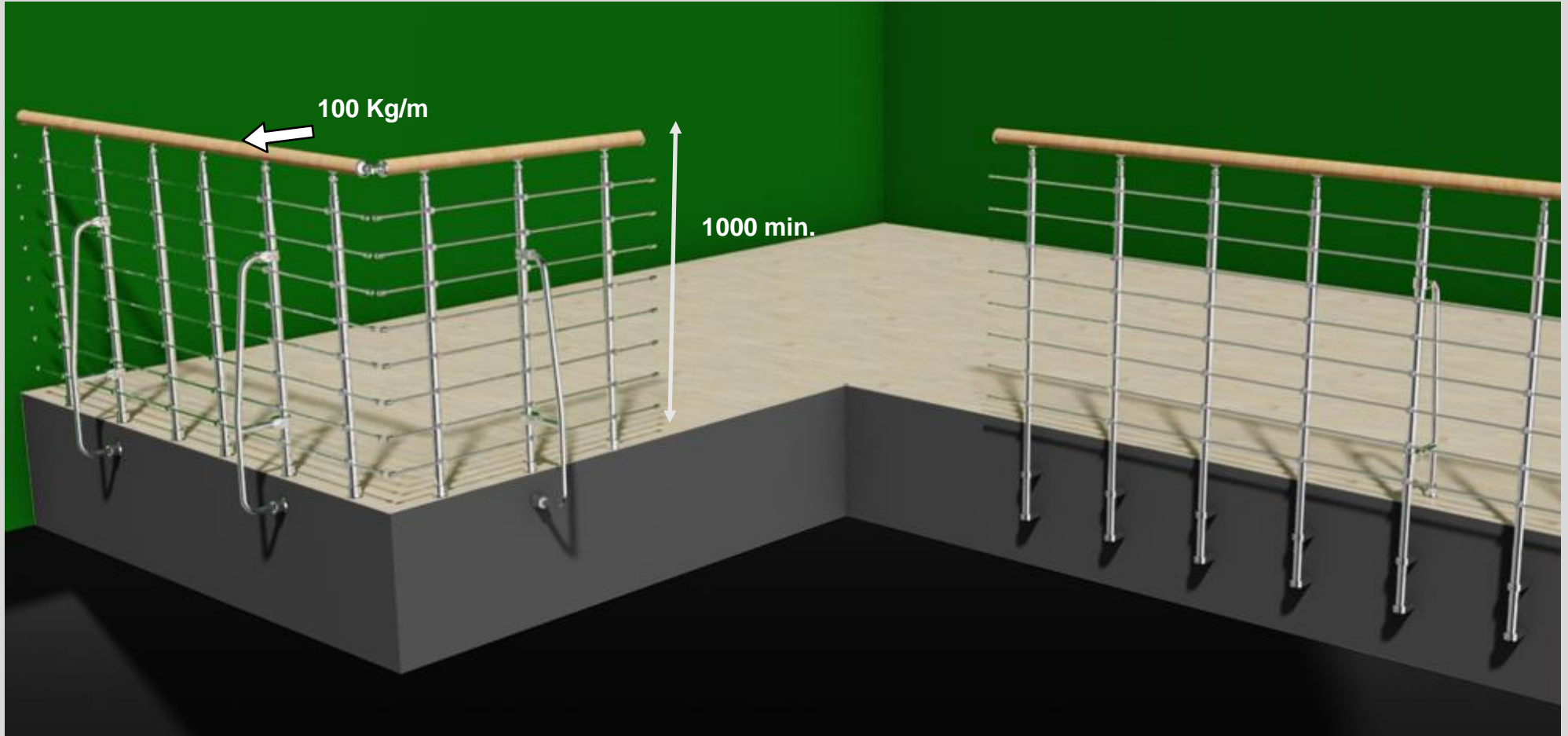
|   | G10  | G11  | G12  | G13  | G14  | G15  | G16  | G17  |
|---|------|------|------|------|------|------|------|------|
| h | 1870 | 2040 | 2210 | 2380 | 2550 | 2720 | 2890 | 3060 |
| h | 2310 | 2520 | 2730 | 2940 | 3150 | 3360 | 3570 | 3780 |



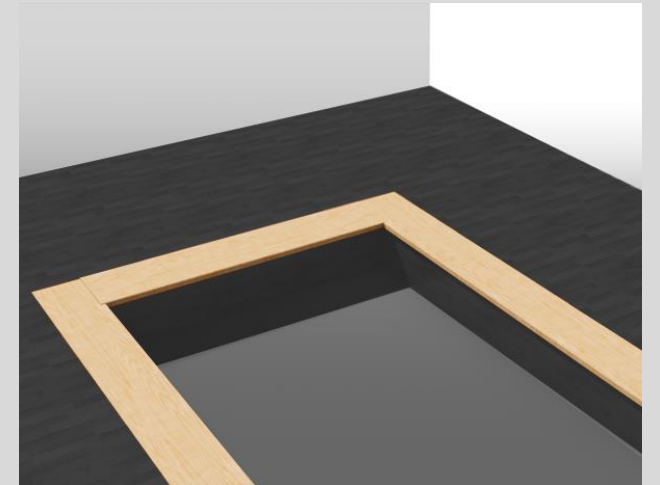


| G10   | G10  | G11  | G12  | G13  | G14  | G15  | G16  | G17  |
|---|------|------|------|------|------|------|------|------|
|  | h    | h    | h    | h    | h    | h    | h    | h    |
|   | 1870 | 2040 | 2210 | 2380 | 2550 | 2720 | 2890 | 3060 |
|   | 2310 | 2520 | 2730 | 2940 | 3150 | 3360 | 3570 | 3780 |

## CHROME



## OPTIONAL





# COLORS

Faggio, Beech, Hêtre, Buche, Haya



252  
Noce medio  
Light chestnut  
Nussbaumholz  
Noyer moyen  
Nogal medio

253  
Naturale  
Natural  
Naturbuchenholz  
Couleur naturelle  
Natural

258  
Rovere  
Oak  
Eichenholz  
Couleur rouvre  
Roble

287  
Ciliegio  
Cherry stain  
Kirschholz  
Couleur cerisier  
Color cerezo

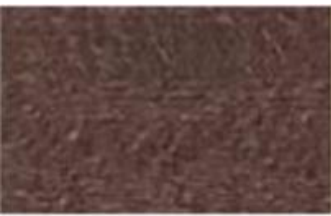


289  
Doussié  
Doussié  
Doussié  
Doussié  
Doussié

311  
Sbiancato  
Whitened wood  
Bleichesholz  
Blanchi  
Madera blanqueada

312  
Wenghè  
Wenghè  
Wenghè  
Wenghè  
Wenghè

400  
Grigio  
Grey  
Grau  
Gris  
Gris



410  
Cacao  
Cacao  
Kakao  
Cacao  
Cacao

420  
Sabbia  
Sand  
Sandfarben  
Sable  
Arena

430  
Tortora  
Dove grey  
Taubengrau  
Gris tourterelle  
Gris ceniciento

305S  
Bianco  
White  
Weiß  
Blanc  
Blanco

390S  
Nero  
Black  
Schwarz.  
Noir  
Negro



401DEC  
Grigio  
Grey  
Grau  
Gris  
Gris

411DEC  
Cacao  
Cacao  
Kakao  
Cacao  
Cacao

421DEC  
Sabbia  
Sand  
Sandfarben  
Sable  
Arena

431DEC  
Tortora  
Dove grey  
Taubengrau  
Gris tourterelle  
Gris ceniciento

# COLORS

Rovere, Oak, Chêne, Eichen, Roble



252  
Noce medio  
Light chestnut  
Nussbaumholz  
Noyer moyen  
Nogal medio

253  
Naturale  
Natural  
Naturbuchenholz  
Couleur naturelle  
Natural

287  
Ciliegio  
Cherry stain  
Kirschholz  
Couleur cerisier  
Color cerezo

289  
Doussié  
Doussié  
Doussié  
Doussié  
Doussié



311  
Sbiancato  
Whitened wood  
Bleichesholz  
Blanchi  
Madera blanqueada

312  
Wenghè  
Wenghè  
Wenghè  
Wenghè  
Wenghè

400  
Grigio  
Grey  
Grau  
Gris  
Gris

410  
Cacao  
Cacao  
Kakao  
Cacao  
Cacao



420  
Sabbia  
Sand  
Sandfarben  
Sable  
Arena

430  
Tortora  
Dove grey  
Taubengrau  
Gris tourterelle  
Gris ceniciento

305S  
Bianco  
White  
Weiß  
Blanc  
Blanco

390S  
Nero  
Black  
Schwarz.  
Noir  
Negro



401DEC  
Grigio  
Grey  
Grau  
Gris  
Gris

411DEC  
Cacao  
Cacao  
Kakao  
Cacao  
Cacao

421DEC  
Sabbia  
Sand  
Sandfarben  
Sable  
Arena

431DEC  
Tortora  
Dove grey  
Taubengrau  
Gris tourterelle  
Gris ceniciento

# COLORS

Trattamenti del legno - Wood treatments - Traitements du bois

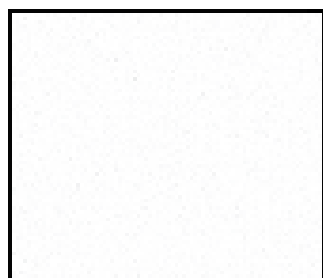


**OPTIONAL**  
 Trattamento spazzolato  
 Brushed treatment,  
 Traitement brossé,  
 Gebürstetes Behandlung,  
 tratamiento cepillado

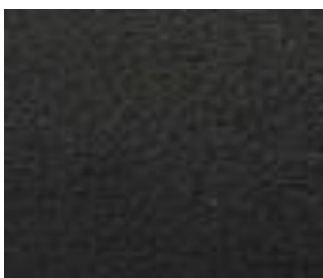


**OPTIONAL**  
 Tinta a campione,  
 Sample color,  
 Tinte à échantillon,  
 Farbe nach Muster,  
 Muestra de color

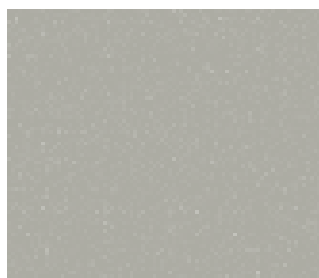
## Metal



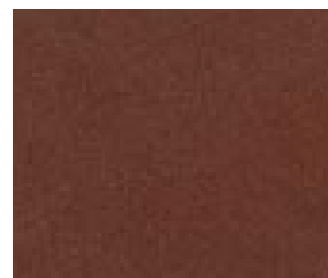
LAS91  
 Bianco  
 White  
 Blanc  
 Weiss  
 Blanco



95 RG  
 Nero raggrinzato  
 Wrinkled Black  
 Noir granité  
 Schwarz runzlig  
 Negro arrugado



LAS97  
 Grigio raggrinzato  
 Wrinkled Grey  
 Gris granité  
 Grau runzlig  
 Gris arrugado



COR80  
 Effetto Corten  
 Corten effect  
 Efect corten  
 Corten – Effekt  
 Efecto corten



Cromato lucido  
 Chromé  
 Chromium-plated  
 Verchromt  
 Cromado



Inox